

We are read everywhere

WARWICK, RHODE ISLAND

Sarah Brooke Stevens, RIMS Office Manager (second from left), **Karen Woodbine**, RIMJ Advertising Sales Representative (far right), and US Army Health Care Recruiters, (left to right) **Captain Mario Martinez**, **Sergeant First Class Brock R. Clukey**, and **Staff Sergeant Kenneth M. Phipps**, take a moment to view the journal on their phones while attending Rhode Island Medical Society's **Weight+ Wellness Summit** on March 7 at the Crowne Plaza in Warwick.



AWENDAW, SOUTH CAROLINA

Brothers **Mark R. Migliori, MD**, (left) a plastic surgeon at MMK Plastic Surgery in Minneapolis, and **Stephen J. Migliori, MD**, (right) a general surgeon at University Surgical Associates in Providence, view the June 2016 Ophthalmology issue of RIMJ guest edited by their brother, **Michael E. Migliori, MD**, Ophthalmologist-in-Chief at RI Hospital, while vacationing at their brother **Donald Migliori's** home in coastal South Carolina.



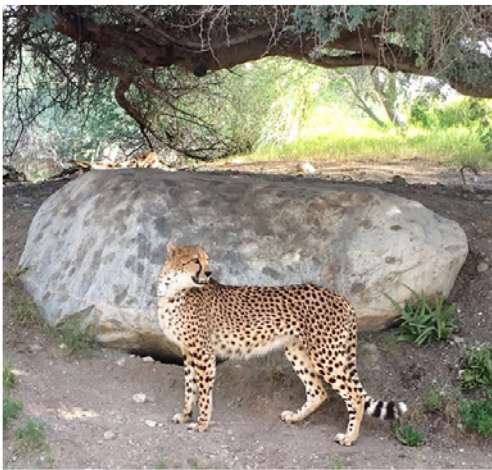
A ten-foot-long American alligator suns itself at a waterway near the home, displaying no interest whatsoever in RIMJ.

Wherever your travels take you, be sure to check the latest edition of RIMJ on your mobile device and send us a photo: mkorr@rimed.org.

We are read everywhere

PALM DESERT, CALIFORNIA

A visit to The Living Desert Zoo/Gardens in nearby Palm Desert is home to a variety of wildlife exhibits, conservation and educational programs, an endangered species carousel, veterinary hospital, and hands-on exhibits, such as camel riding or feeding the giraffes. Here RIMJ managing editor **Mary Korr** checks the March issue of the journal in front of the savannah where giraffes roam. Nearby, is a separate cheetah habitat.



PHOTOS BY MARY & KEN KORR



INDIAN WELLS, CALIFORNIA

On a recent trip to the SoCal desert area, **Dr. Ken Korr** teamed up with **Dr. Ed Bough**, formerly of Rhode Island, for a round of golf in Indian Wells. The Southern California desert region is a well-known to golfers, tennis players, hikers and nature lovers who visit the areas of vast wilderness and diverse ecosystems such as Joshua Tree National Park in Twentynine Palms.

Wherever your travels take you, be sure to check the latest edition of RIMJ on your mobile device and send us a photo: mkorr@rimed.org.

Specialized financing

for a successful practice.

STAYING COMPETITIVE in today's changing healthcare environment can be a challenge. It may require investing in new technologies, expanding services, even merging with another practice.

For the specialized financing you need to help keep your practice successful, contact Dev Singh at 401.688.3314 or asingh@websterbank.com.

Webster Bank is the affinity banking partner for the members of



**RHODE ISLAND
MEDICAL SOCIETY**



LIVING UP TO YOU®

All credit products, pricing and overdraft protection are subject to the normal credit approval process. Some applications may require further consideration and/or supplemental information. Certain terms and conditions may apply. SBA guaranteed products may also be subject to additional terms, conditions and fees. All loans/lines of credit require a Webster business checking account which must be opened prior to loan closing and which must be used for auto-deduct of payment.
The Webster Symbol and Webster Bank are registered in the U.S. Patent and Trademark Office.

Webster Bank, N.A. Member FDIC, Equal Housing Lender 
©2016 Webster Financial Corporation. All rights reserved.